



A SECURE INVESTMENT
EXCLUSIVE APARTMENTS AT THE HEART OF CASABLANCA'S REFERENCE PROJECT



*I am Anfa Place
I am the difference...*



INDEX

PRESENTATION	6
HOTEL	8
SHOPPING CENTER	10
BUSINESS CENTER	12
TOURIST RESIDENCES	14
APARTMENTS	16
PROJECT STAKEHOLDERS	28

AN EXCEPTIONAL PROJECT IN THE HEART OF CASABLANCA

Anfaplace Living Resort is a prestigious project located in an exceptional waterfront setting, on **Casablanca's seaside promenade**.

It is a reference project in the city, designed by **Foster + Partners**, a world leader in the design of urban projects.

Developed by Inveravante, a real estate company with broad experience in the development of real estate projects at the international level, Anfaplace Living Resort extends over 9.3ha. With innovative design and aesthetic construction, **Anfaplace Living Resort** is a totally integrated project, making it part of the dimension of modernity of the Moroccan metropolis.

The project stands out, thanks to the harmony of its residential, commercial, professional and tourist components, as an **exceptional opportunity of investment in Casablanca**.





FOUR SEASONS CASABLANCA A LUXURY HOTEL IN THE HEART OF ANFAPLACE

Anfaplace Living Resort will host the first **Four Seasons** Hotel in Casablanca. Indeed, the Canadian chain has chosen Anfaplace to open its hotel in Casablanca. The **Four Seasons Casablanca** offers **183 rooms** and suites, combined with a wide-range of quality services provided by hospitality professionals. Like the many other hotels managed by the **Four Seasons** group, the one located in Casablanca will comply with the highest standards.

This gem which will be hosted by **Anfaplace Living Resort** complements the multi-components offer of the project and will help to boost tourism in Casablanca.


FOUR SEASONS HOTEL
Casablanca





Located on the beachfront, **Anfaplace Shopping Center** is an innovative shopping center covering an area of 36.000m². **First urban shopping center in Casablanca**, the center offers an innovative concept combining Fashion and Fooding thanks to **the best brands** of fashion, furniture, decoration, beauty, jewelry, culture and recreation.

Anfaplace Shopping Center also offers a diverse **Food Court**, hosting various cozy cafés and restaurants with a terrace and a playground for kids. For a **complete shopping experience, Anfaplace Shopping Center** also provides multiple services for its visitors, including an underground parking of 1 200 spaces, a pharmacy, banking services...



ANFAPLACE SHOPPING CENTER THE REFERENCE OF SHOPPING IN CASABLANCA



ANFAPLACE BUSINESS CENTER THE NEW PROFESSIONAL ADDRESS IN CASABLANCA



Anfaplace Business Center is the new professional address of Casablanca. Entirely operational, this business center extends over 16,000 m² and comes in various surfaces, adapted to the different needs of companies. Its office floors are functional and modern, its accessibility and amenities **make it an ideal location to set up a business in the heart of the economic capital** of Morocco.

Reference companies such as Siemens, McKinsey & Company, DVH, Allen & Overy and Yamedet Emaar Rak have chosen it for their premises in Casablanca. Companies wishing to own a prestigious address can still take advantage of the **opportunities available in Anfaplace Business Center.**



PESTANA CASABLANCA AN INTELLIGENT INVESTMENT,

REAL ESTATE
RESIDENCES OF
TOURIST PROMOTION



PESTANA, WORLD LEADER IN RENTAL MANAGEMENT

Anfaplace Living Resort offers Real Estate Residences of Tourist Promotion, a smart investment formula combining **luxury real estate and hotel services**.

You can acquire a high standard property and earn profit from it through rental management. Thus, you will benefit from **immediate and assured profitability**, thanks to the expertise of the largest Portuguese rental management Group, **Pestana**.

The properties are available in the form of studios and one bedroom apartments, **fully equipped and furnished**.

The management of **Pestana Casablanca** tourist residences was entrusted to **Pestana**, a renowned operator in the management of luxury hotel and leisure complexes worldwide. With an experience of over 40 years, the Portuguese group manages 26 projects in Europe and 65 in the world, to build a network of nearly 90 hotels in 14 countries on different continents.

With a recognized and proven expertise, **Pestana** brings its expertise to provide premium services, within an exceptional residential complex in Casablanca.

THE BEST RESIDENTIAL
OFFER IN CASABLANCA



Anfaplace Living Resort offers sumptuous apartments with stunning views of the ocean.

An ideal investment, subtle mixture of aesthetics, sophistication and comforts. The apartments are conceived in an innovative architectural style and offer quality materials and a privileged location facing the sea. The apartments of **Anfaplace Living Resort** are equipped with the latest technology in terms of construction and development. Structures, carpentry, waterproofing and all the other aspects of the apartments have been **treated with innovation** and in line with the highest standards, in order to offer an **exclusive experience** in the heart of Casablanca.





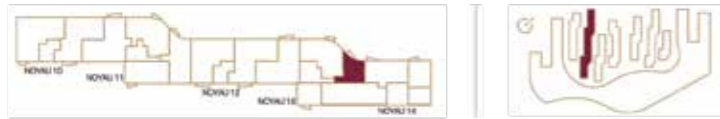
Anfaplace Living Resort offers 260 exclusive apartments by Foster+Partners. These apartments are available in 1 to 3 bedrooms with different surfaces and views.

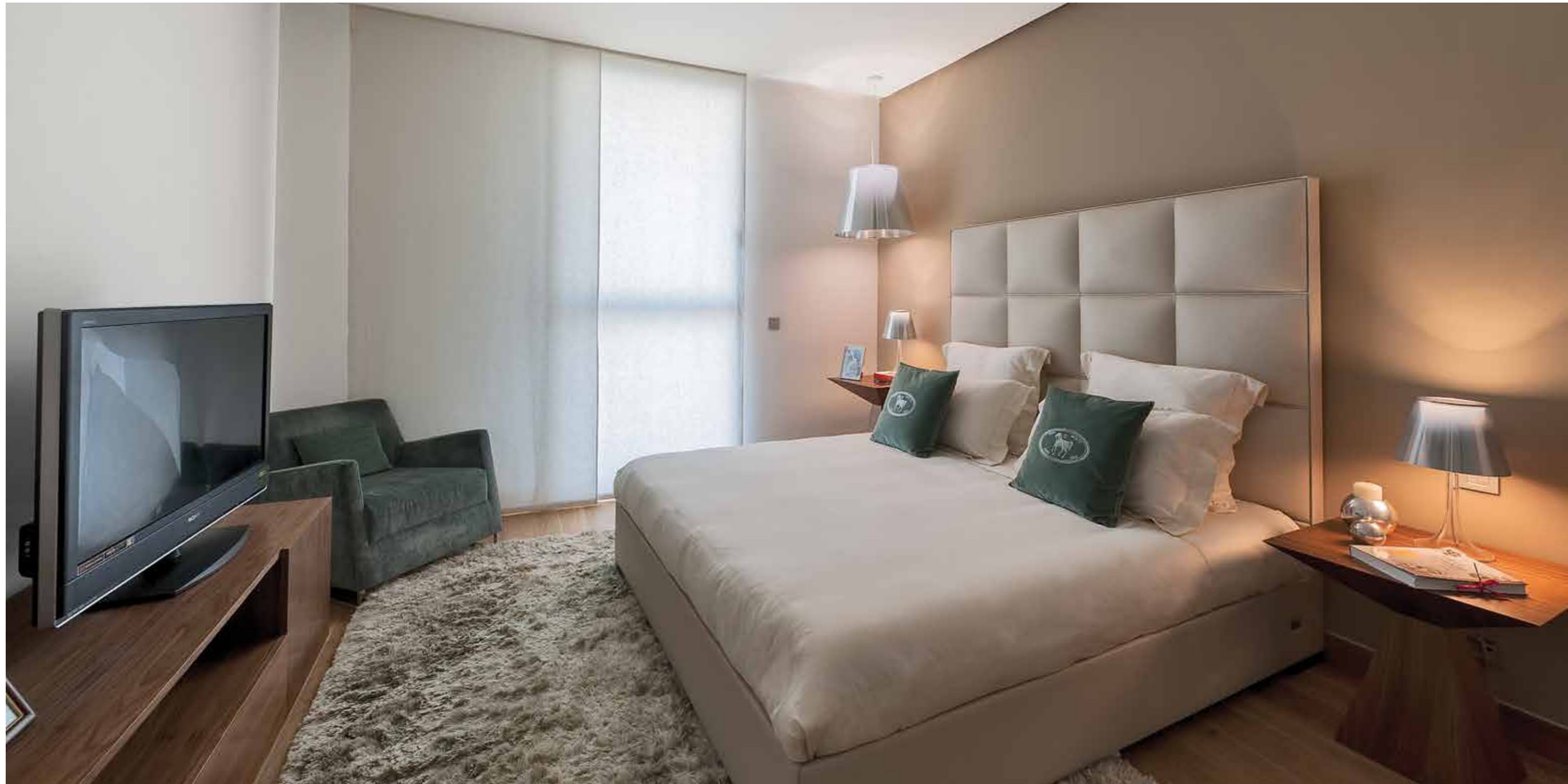


1 BEDROOM APARTMENT

Your private cocoon opens its doors in AnfaPlace Living Resort. Similar to the entire project, this apartment represents a privileged lifestyle in Casablanca. Quality materials, cutting-edge architecture and finishes properly executed, all the elements come together so that you can experience the difference in front of the sea.

Level: Ground floor
Orientation: North-East
Type: 1 room + living room
Surface: 77 sq m + 13 sq m parking

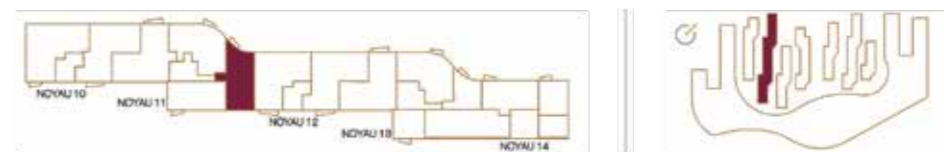




2 BEDROOM APARTMENT

Welcome to your new haven ... Your exclusive apartment promises dreamy moments in the most exclusive project in Casablanca. it offers all the necessary amenities and is distinguished by its elegant architecture and first class finishes.

Level: 1st floor
Orientation: Crossing
Type: 2 rooms + living room
Surface: 137 sq m + 13 sq m parking



3 BEDROOM APARTMENT

Discover a true architectural gem. Generously deployed on 190 sq m, the apartment invites you to live the exception in Casablanca. Bright interiors, intelligent layout, everything has been designed so that you can enjoy every moment in your exclusive apartment.

Level: 1st floor

Orientation: South-West

Type: 3 rooms + living room

Surface: 190 sq m + 25 sq m parking



ANFAPLACE LIVING RESORT

EXPERIENCE THE DIFFERENCE

Anfaplace Living Resort is an invitation to a **unique lifestyle** in the **heart of Casablanca**. Exclusive apartments, offices, shopping center, recreation areas and promenades mingle in harmony to give birth to **an exceptional prestigious project**.

Its mixed uses and exclusive environment make it an **ideal place to experience the difference** while investing in a safe and profitable project.



PROJECT STAKEHOLDERS

REFERENCE COMPANIES

Anfaplace Living Resort is a unique project of its kind, designed and developed by reference international companies:

INVERAVANTE | Developer with extensive **international experience**, Inveravante possesses an excellent expertise in the implementation of **large real estate projects**.

Foster + Partners | **World leader** in the design of projects with a strong presence in **major cities worldwide**, author of emblematic projects in London, Berlin, Madrid, New York...





Promoted by

INVERAVANTE

Designed by

Foster + Partners

0522 940 430
www.anfaplace.com